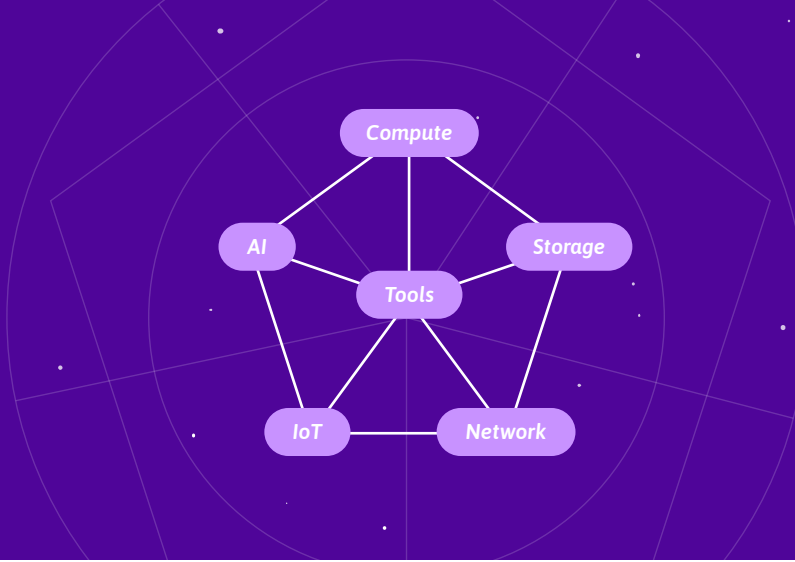


Our Elements Ecosystem

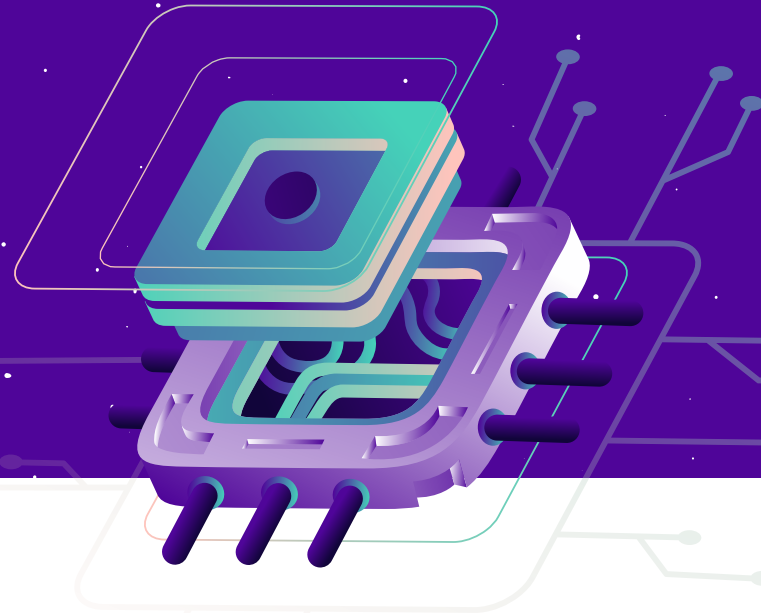


Compute								
	Development Instance	General Purpose Instance	GPU Instance	Bare Metal	Kubernetes Kapsule	Container Registry	Serverless FaaS	Serverless CaaS
Storage								
	Object Storage	Block Storage	C14 Cold Storage	Database for PostgreSQL	Database for MySQL			
Network						 <small>Soon</small>	 <small>Soon</small>	 <small>Soon</small>
	Anti-DDoS	Load Balancer	Private Network	Domain	DNS	CDN	SMS	SMTP
IoT		 <small>Soon</small>						
	IoT Hub	IoT Edge						
AI								
	GPU Instance	AI Inference						
Tools								
	Console	API	CLI	Terraform	Cloud-init	SDK Go	SDK Python	Multi-user
	 <small>Soon</small>	 <small>Soon</small>						
	Cloud Projects	Monitoring						



General Purpose Instance

High performance instances designed for production and scalable infrastructures.



Included Services

- Image Deployment
- Flexible IPs
- Security Groups
- DDos Protection
- Placement Groups
- API, CLI & SDK
- Snapshots
- 24/7 Ticket Support

Processor 4 to 48 vCPUs	Processor type AMD EPYC, 7000 series
Memory 16 to 256 GB RAM	Memory type DDR4 ECC
Storage 150 to 600 GB + Block Storage	Storage type SSD NVMe
Bandwidth 500 Mbit/s to 10 Gbits/s	Service level 99.99% SLA

Available regions: Paris | Amsterdam

Use Cases

✓ High Traffic Applications

Our virtual machines have been designed to host your critical production environments as critical and high traffic applications with a service level agreement (SLA) of 99.99%. You can deploy servers in seconds directly using the console or the command-line interface (CLI), create fleets of cloud instances with Terraform and distribute your traffic with Load Balancer.

✓ High Performance Computing

With high-end AMD EPYC vCPUs and local NVMe SSD storage, our General Purpose instances are ready to host your high computing workloads. You can use them for batch processing, parallel computing or data manipulation, whether it is one-time or recurring. You can scale up or down in a minute according to your needs.

✓ Software as a Service

Our General Purpose virtual machines can securely run software as a service (SaaS). You can restrict access to your VMs using security groups and backup or restore your data in a few clicks. These data can also easily be stored on Block Storage or Object Storage.

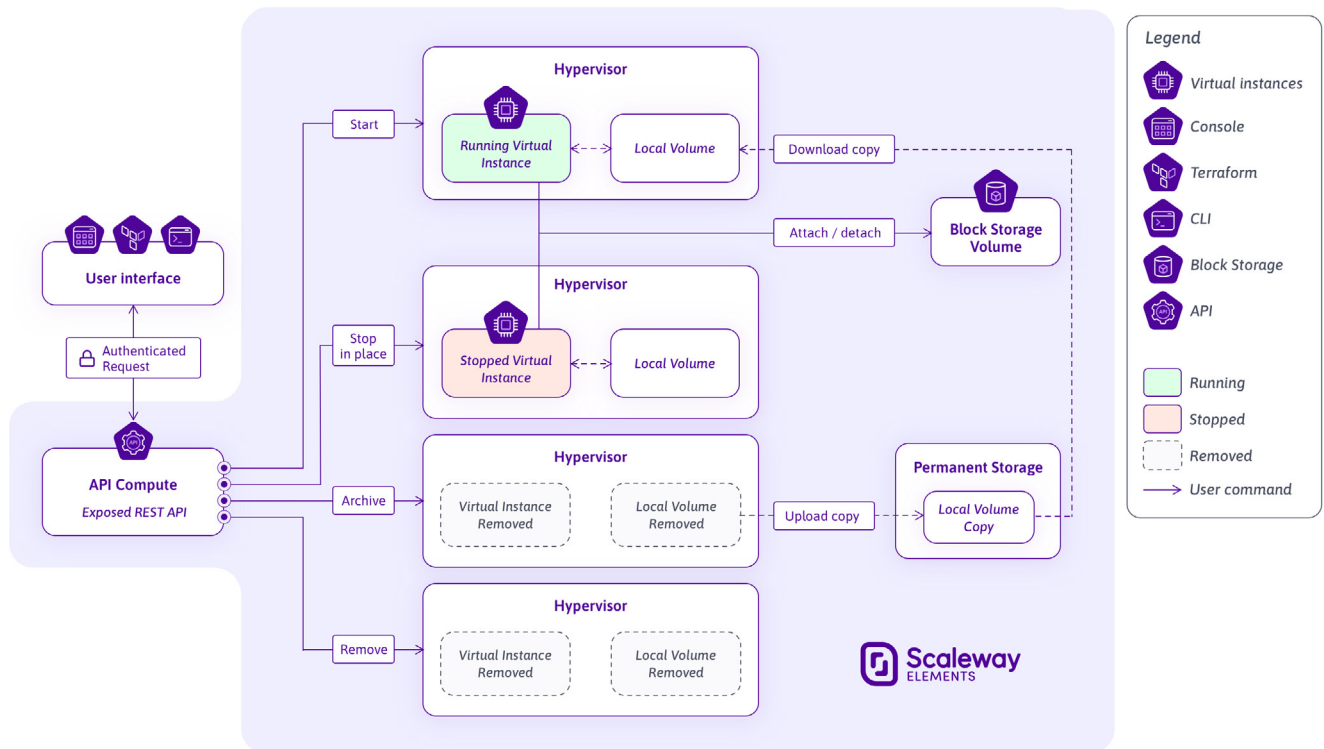


Aternos
revolutionizes cloud gaming with instant horizontal scaling

"Thanks to the Scaleway's cloud instances we were able to reduce the waiting time for our users from several hours to just a few minutes. This experience really made all the difference for us." Matthias Neid, CEO of Aternos

Product Lifecycle

Instances are offered with a set of native actions for simplified control from the console and API. They work with our other cloud solutions and the deployment and automation tools Ansible and Terraform are compatible.



Our Strengths

✓ High Availability

General Purpose Instances are ideal to deploy your infrastructures in production. With a 99.99% service level, local storage replication and high-end performance, they ensure the high availability of your services.

✓ European Cloud

We are proud to be one of the major European cloud providers. All our services are located within the European Union and protected by its regulations. This allows us to offer you a sovereign and GDPR-compliant cloud platform.

✓ Unlimited Transfer

We will not charge you for the inbound and outbound transfer of these virtual machines, which stay free and unlimited. This allows you to grow your business without having to worry about costs. Your expenses are always predictable.

Find the benchmark on scaleway.com ▶

Our range

Name	vCPUs	RAM	SSD	Bandwidth
GP1-XS	4 vCPUs	16 GB	150 GB NVMe	500 Mbit/s
GP1-S	8 vCPUs	32 GB	300 GB NVMe	800 Mbit/s
GP1-M	16 vCPUs	64 GB	600 GB NVMe	1.5 Gbit/s
GP1-L	32 vCPUs	128 GB	600 GB NVMe	5 Gbit/s
GP1-XL	48 vCPUs	256 GB	600 GB NVMe	10 Gbit/s

✓ In addition

- Block Storage**
To expand your storage
- Load Balancer**
For a highly available infrastructure
- Database**
For databases managed by our experts
- Bare Metal**
For 100% dedicated resources